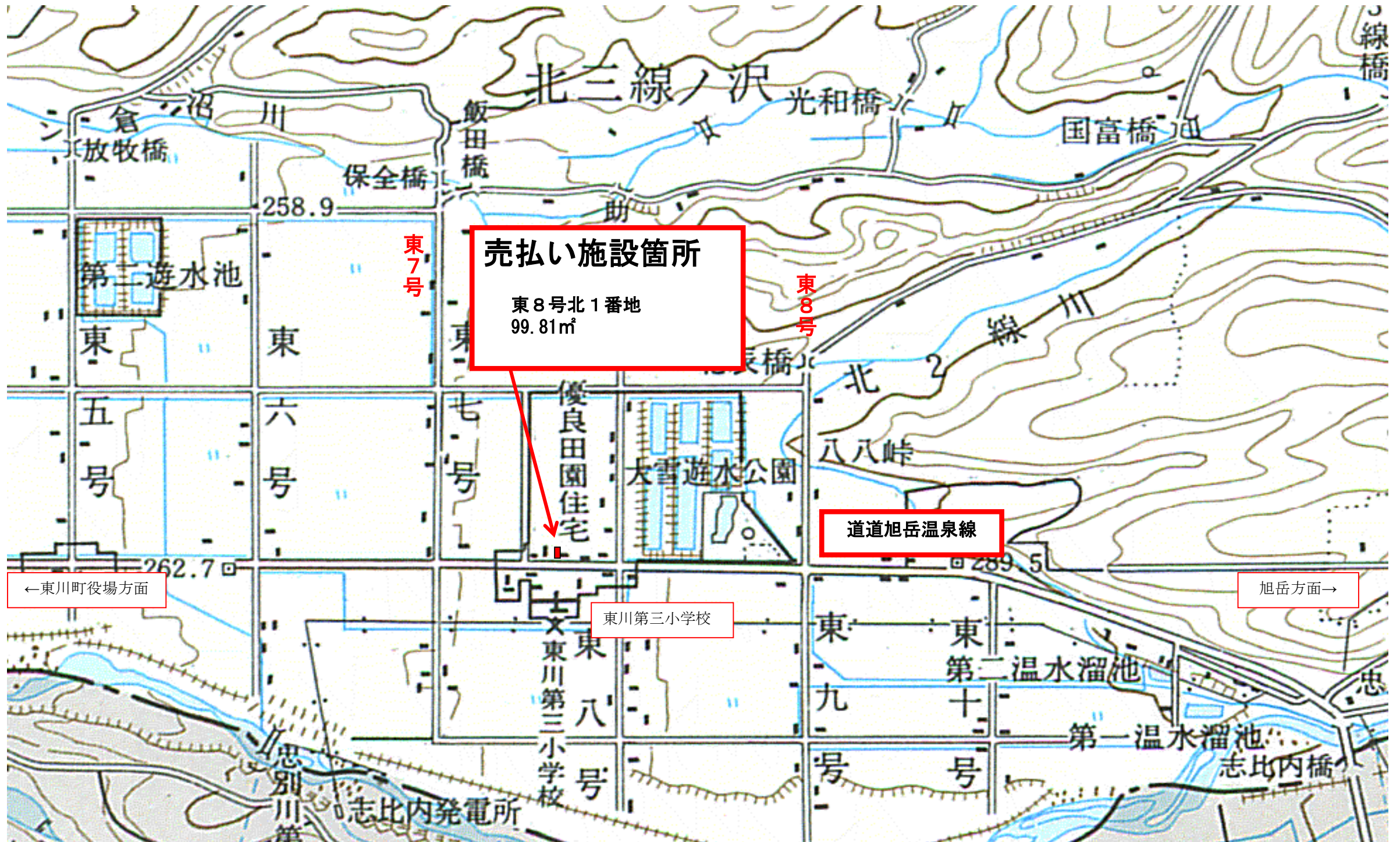
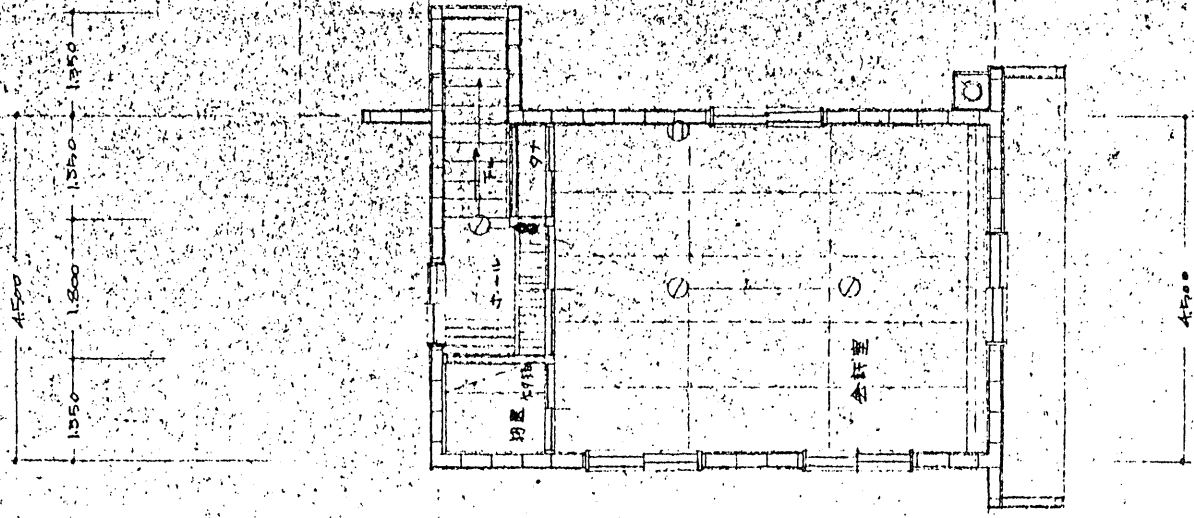


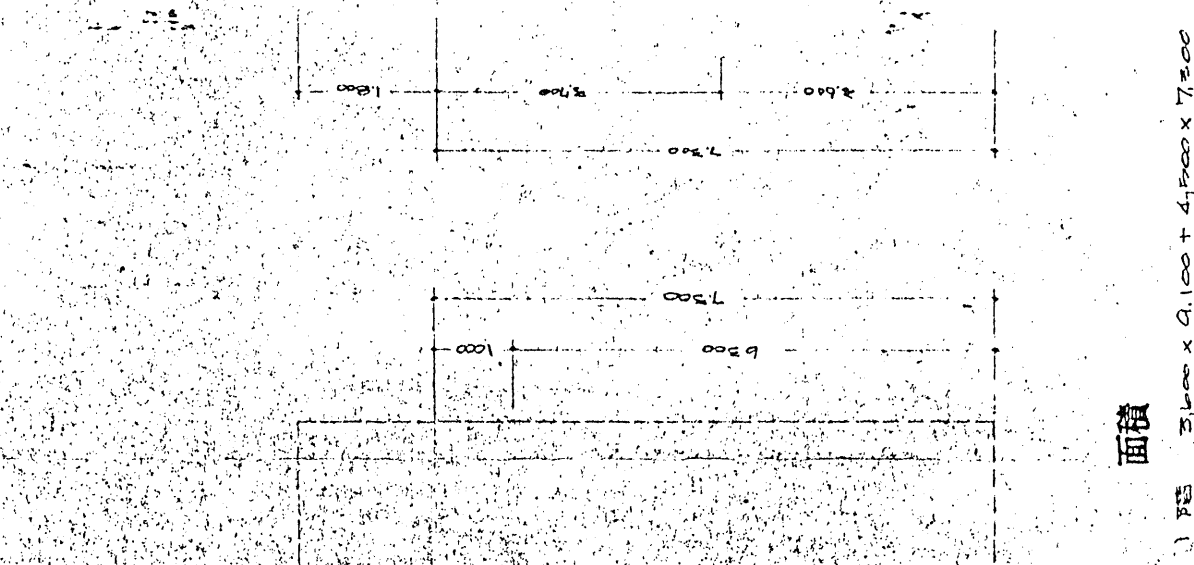
位置図





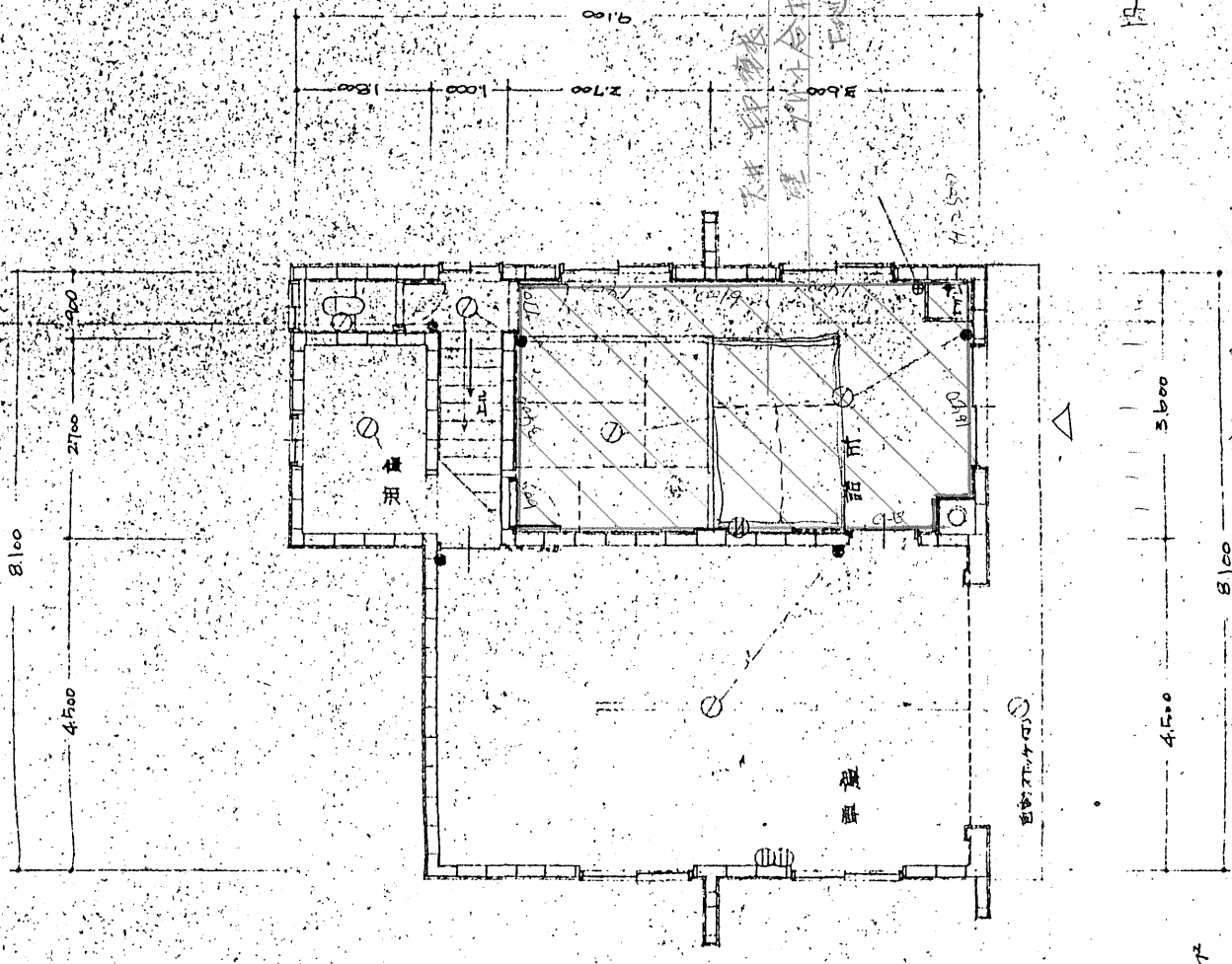
平面図

S ~ 1/100



平面図

S ~ 1/100



面積

1階 $3,600 \times 9,100 + 4,500 \times 7,300$
 $= 32,760 + 32,850 = 65,610 \text{ m}^2$

2階 $4,500 \times 7,300 + 1,550 \times 1,000$
 $= 32,850 + 1,550 = 34,400 \text{ m}^2$

計 99,810 m^2

基礎

$(3,400 \times 2 + 610 \times 2) \times 2,500$
 $= 16,500 \times 2,500 = 41,250 \text{ m}^2$

平面図

S ~ 1/100

$14,000 \times 1,300 \times 2 = 35,499 \text{ m}^2$

内陸

建築費概算
 建築費概算
 建築費概算

外観

